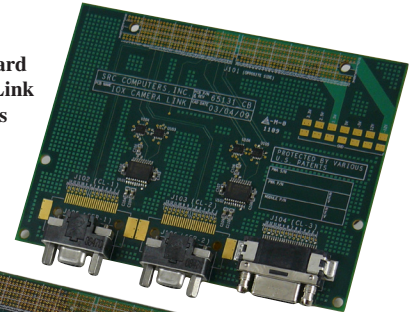


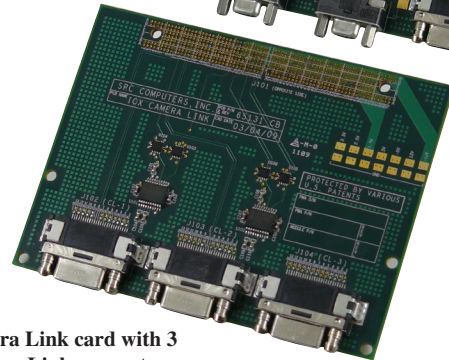
IOX Camera Link Interface

The IOX Camera Link Interface is a GPIOX card that will accept three Camera Link base connections or one full or medium connection and one base connection. Each connection supports typical frame sizes and pixel depths, and dot rates, programmed by the user via the Carte™ Programming Environment. In addition to the Camera Link connections, the card can be ordered with an RS232 option to allow the user to connect to additional equipment. The IOX Camera Link Interface card can be used with all SRC® products that support GPIOX.

Camera Link card with 1 Camera Link and 2 RS-232s



Camera Link card with 3 Camera Link connectors



Parameter	Value
Camera Link	3 Camera Link connectors support base, medium and full modes: (3) Base (independent); (1) Full/Medium + (1) Base (independent)
Camera Link Speed	25MHz to 85MHz Camera Link connection data rates Base - 2.38 Gbits/sec Medium - 4.76 Gbits/sec Full - 6.35 Gbits/sec
Image Triggering	Free Running External Triggered Modes using CC1 through CC4
Multiple Taps	Camera Link standard multi-tap: Full: 8 x 8-bit Medium: 4 x 8-bit, 4 x 10-bit, 4 x 12-bit, 1 x 30bit/RGB, 1 x 36-bit Base: 3 x 8-bit, 2 x 10-bit, 2 x 12-bit, 1 x 14-bit, 1 x 16-bit, 1 x 24-bit/RGB Additional: 4 x 14-bit, 4 x 16-bit, 1 x 48bit, 1 x 64-bit Other configurations are programmable by the user
Image Acquisition Size	Area-Scan Digital or Line-Scan 640 x 480; 1024 x 1024; 1600 x 1200; 1920 x 1080 2048 x 2048; 4004 x 2672; 4872 x 3248 Other configurations are programmable by the user
Pixel Size	8, 10, 12, 14 or 16 bits/pixel Mono, 8 or 10 bit RGB.
Camera Communication	9600, 19200, 38400, 57600, and 115200 Via the Camera Link Interface
RS232 Option	Replace one or two base Camera Link connectors with a Commercial Micro D plug R/A9 Supports TD, RD, RTS, CTS signal protocols